

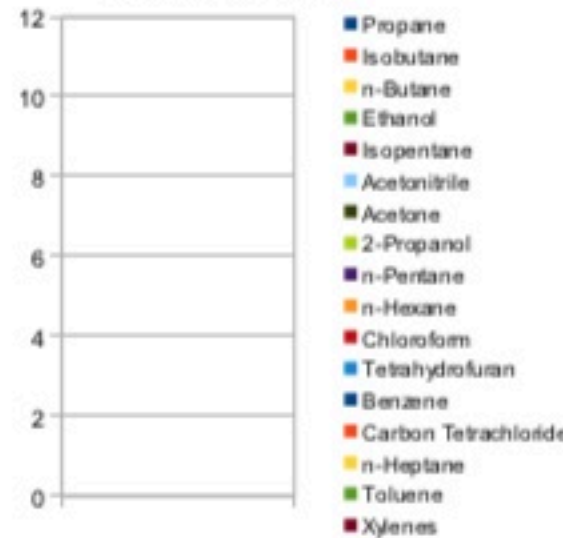
Sample Information			
Sample Identification	ZL/PETZ ADVANTage		
Laboratory Number	2018009110		
Batch Number	ZPT041518		
Matrix	Tincture		
Analyzed Date	07/10/18		
Extraction Date	07/10/18		
Cannabinoid (HPLC)	mg/mL	mg /Bottle	%
Compound			
CBD-V	0.00	0.00	0.00%
CBD-A	0.00	0.00	0.00%
CBG	0.20	6.01	0.02%
CBD	10.40	312.04	1.05%
THC-V	0.00	0.00	0.00%
CBN	0.00	0.00	0.00%
Delta 9-THC	0.47	14.13	0.05%
CBC	0.00	0.00	0.00%
THC-A	0.00	0.00	0.00%
Delta 8-THC	0.00	0.00	0.00%
Cannabinoids Total			
Max Active THC	0.47	14.13	0.05%
Max Active CBD	10.40	312.04	1.05%
T. Active Cannabinoids	11.07	332.19	1.12%
Total Cannabinoids	11.07	332.19	1.12%
Max Active Ratios			
	22.1	:1 CBD to THC	
	0.0	:1 THC to CBD	

Cannabinoid %



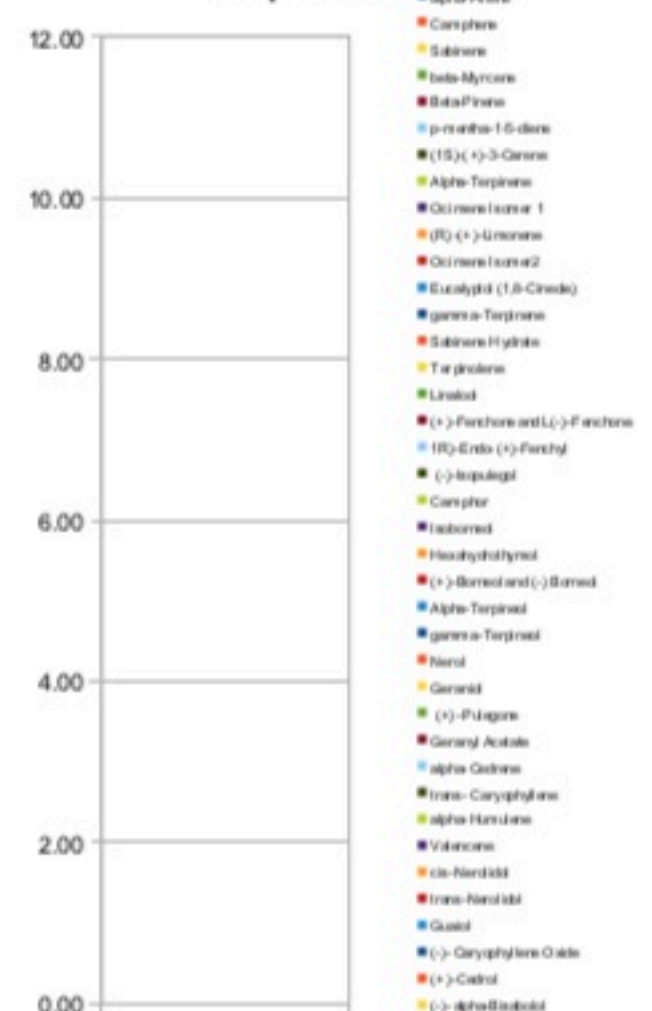
RS (GCMS-HS)	PPM	RL
Compound		
Propane	<5.0	5.0
Isobutane	<5.0	5.0
n-Butane	<5.0	5.0
Ethanol	<5.0	5.0
Isopentane	<5.0	5.0
Acetonitrile	<5.0	5.0
Acetone	<50.0	50.0
2-Propanol	<5.0	5.0
n-Pentane	<5.0	5.0
n-Hexane	<5.0	5.0
Chloroform	<5.0	5.0
Tetrahydrofuran	<5.0	5.0
Benzene	<5.0	5.0
Carbon Tetrachloride	<5.0	5.0
n-Heptane	<5.0	5.0
Toluene	<5.0	5.0
Xylenes	<10.0	10.0


Residuals PPM



Terpene (GC-MS)	mg/mL	mg/Bottle
Compound		
alpha-Pinene	NT	NT
Camphene	NT	NT
Sabinene	NT	NT
beta-Myrcene	NT	NT
Beta-Pinene	NT	NT
p-mentha-1-5-diene	NT	NT
(1S)-(+)-3-Carene	NT	NT
Alpha-Terpinene	NT	NT
Ocimene Isomer 1	NT	NT
(R)-(+)-Limonene	NT	NT
Ocimene Isomer2	NT	NT
Eucalyptol (1,8-Cineole)	NT	NT
gamma-Terpinene	NT	NT
Sabinene Hydrate	NT	NT
Terpinolene	NT	NT
Linalool	NT	NT
(+)-Fenchone and L(-)-Fenchone	NT	NT
1R)-Endo-(+)-Fenchyl	NT	NT
(-)-Isopulegol	NT	NT
Camphor	NT	NT
Isoborneol	NT	NT
Hexahydrothymol	NT	NT
(+)-Borneol and (-) Borneol	NT	NT
Alpha-Terpineol	NT	NT
gamma-Terpineol	NT	NT
Nerol	NT	NT
Geraniol	NT	NT
(+)-Pulegone	NT	NT
Geranyl Acetate	NT	NT
alpha-Cedrene	NT	NT
trans-Caryophyllene	NT	NT
alpha-Humulene	NT	NT
Valencene	NT	NT
cis-Nerolidol	NT	NT
trans-Nerolidol	NT	NT
Guaiol	NT	NT
(-)-Caryophyllene Oxide	NT	NT
(+)-Cedrol	NT	NT
(-)-alpha-Bisabolol	NT	NT
<b>Total Terpenes</b>	<b>NT</b>	<b>NT</b>

Terpenes %



Sample Image	
	
Micro Visual:	Not Tested
Percent Moisture	NT

mL/bottle	30
mg THC/bottle	14.13
mg CBD/bottle	312.04
(mg) total cannabinoids/bottle	332.19

Metals	PPM	RL
Compound		
Lead	<0.01	0.010
Arsenic	0.15	0.010
Cadmium	<0.01	0.010
Mercury	0.004	0.001

RL=Reporting Limit  
NA=Not Applicable  
NT=Not Tested



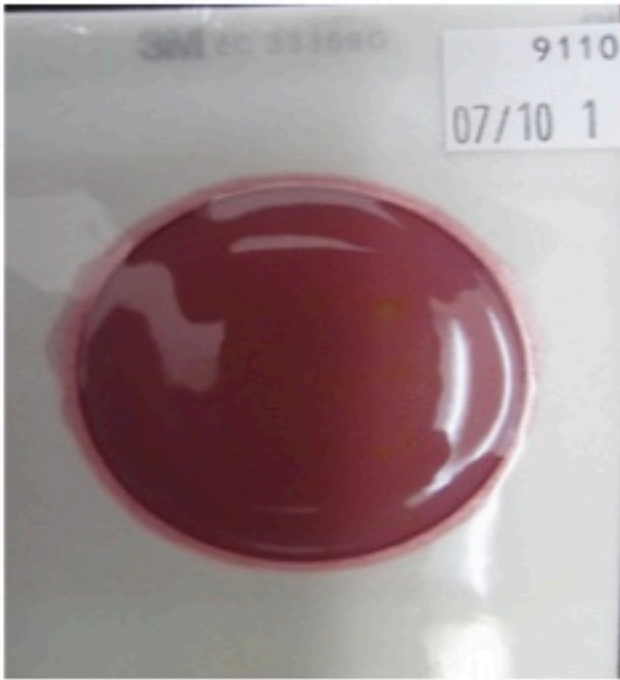

Chemist: TS  
Report Expires: 08/10/18





**DESERT VALLEY TESTING**  
 51 W Weldon Avenue  
 Phoenix, Arizona 85013  
 480-788-6644  
[www.desertvalleytesting.com](http://www.desertvalleytesting.com)

Sample			
<b>Lab ID Number</b>	2018009110	<b>Sample Type</b>	Tincture
<b>Sample Name</b>	ZL/PETZ ADVANTage	<b>Date of Submission</b>	07/10/18

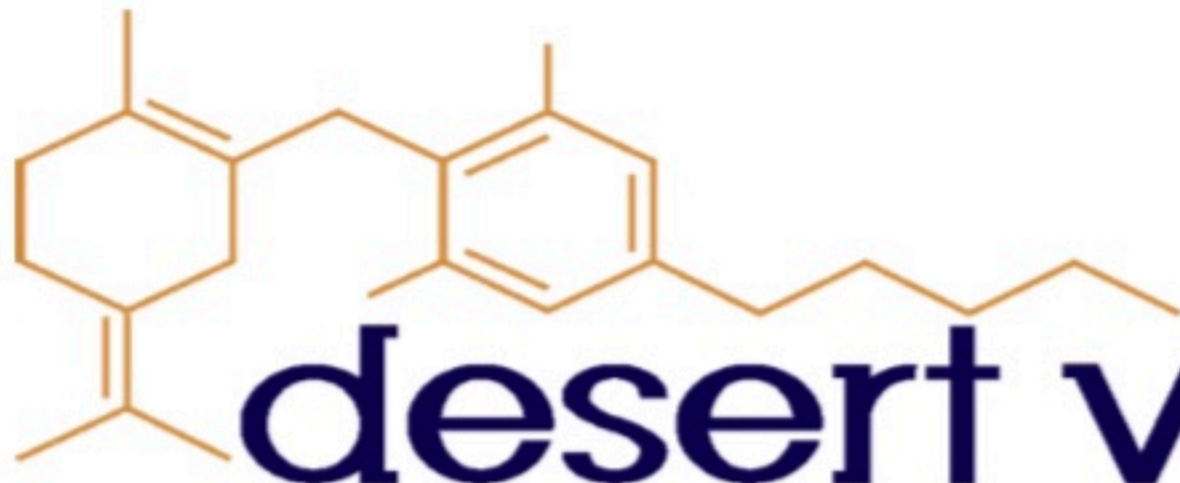
Results	
Coliform/Ecoli	Rapid Yeast and Mold
	
Coliform: ND CFU/g Ecoli: ND CFU/g	Mold: ND CFU/g Yeast: ND CFU/g

Comments	
<b>Generated By:</b> SF/JR	<b>Date Reported:</b> 7/13/18
<b>Reviewed By:</b> ED	<b>Comments:</b>
The microbial results reported represent the product quality and safety of the sample aliquot received for analysis. Microbial results are subject to change due to product stability (shelf life), use and storage of the product over a period of time.	



Results Key: ND = Non Detect, TNTC = Too Numerous to Count





# desert valley

## TESTING

DESERT VALLEY TESTING  
 51 W. Weldon Ave  
 Phoenix, Arizona 85012  
 480-788-6644

[www.desertvalleytesting.com](http://www.desertvalleytesting.com)

Sample Information		
Sample Identification	ZL/PETZ ADVANTage	
Laboratory Number	2018009110	
Batch Number	ZPT041518	
Matrix	Tincture	
Analyzed Date	07/10/18	
Extraction Date	07/10/18	
Pesticides (LC-MS TQ)	Mass	RL
Compound	ppm	ppm
Abamectin	ND	0.003
Bifenazate	ND	0.750
Dimethomorph	ND	3.000
Etoxazole	ND	0.350
Fenhexamid	ND	1.500
Flonicamid	ND	0.350
Fludioxinil	ND	0.001
Imidacloprid	ND	0.003
Myclobutanil	ND	0.450
Paclobutrazol	ND	0.010
Piperonyl Butoxide	ND	0.100
Pyrethrins (R1, jasmoline)	ND	0.050
Spinetoram	ND	0.085
Spinosad (A, D)	ND	0.085
Spirotetramat	ND	0.050
Thiamethoxam	ND	0.001
Trifloxystrobin	ND	0.550



**RL=Report Limit**  
**NT=Not Tested**  
**NR=Not Reported**  
**ND=Non Detected**

**Chemist: TH**  
**Report Expires: 08/20/18**